

**(2020) Primary 5 Science (Term 4) - MGS**

**Add Questions** **Assign** **Settings** **Review**

Duplicate Print Delete

**Assign Test**

**Test Introduction**

[+ Add Introduction](#)

**63 Questions** (58 Points)

**Question Bank:** 9,275 Questions

Test Questions **0 Test Assignments**

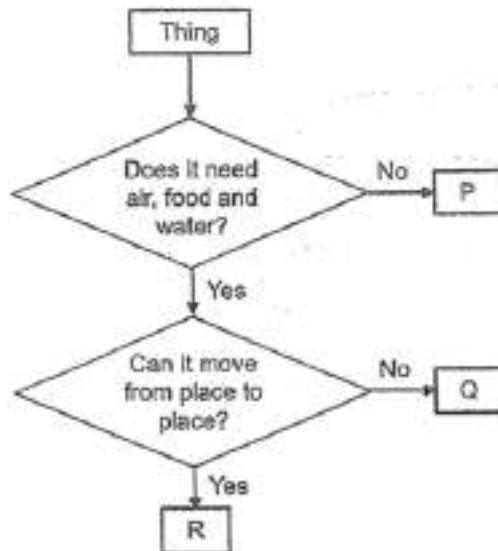
**Question 1**

Primary 5 Science » Primary 5 Science (Term 4)

2 pts

For each question, four options are given. One of them is the correct answer.

The flowchart below is used to identify three things, P, Q and R.



Which of the following are most likely to be P, Q and R?

	P	Q	R
(1)	bacteria	horse	moss
(2)	squirrel	television	mushroom
(3)	fire	moss	cat
(4)	mushroom	bacteria	rabbit

A) 1

- B) 2
- ✓ C) 3
- D) 4

**Question Type:** Multiple Choice  
**Randomize Answers:** No  
**Date Added:** Wed 1st Sep 2021  
**Last Modified:** Mon 6th Sep 2021  
**QID#:** 28,883,802

[Answers](#) | [Edit](#) | [Duplicate](#) | [Used In](#) | [Reorder](#)

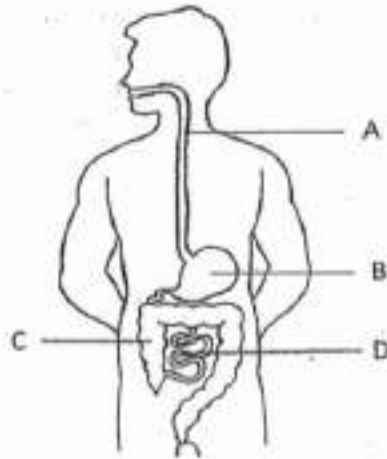
[Remove From Test](#)

## Question 2

Primary 5 Science » Primary 5 Science (Term 4)

2 pts

The diagram below shows the human digestive system with some parts labelled A, B, C and D.



Which parts produce digestive juices?

- A) A and B only
- ✓ B) B and D only
- C) A, B and D only
- D) B, C and D only

**Question Type:** Multiple Choice  
**Randomize Answers:** No  
**Date Added:** Wed 1st Sep 2021  
**Last Modified:** Mon 6th Sep 2021  
**QID#:** 28,883,890

[Answers](#) | [Edit](#) | [Duplicate](#) | [Used In](#) | [Reorder](#)

[Remove From Test](#)

## Question 3

Primary 5 Science » Primary 5 Science (Term 4)

2 pts

The young of insect X and insect Y are shown below.



Insect X



Insect Y

Which of the following statements are correct about the young of insects X and Y?

- A Both will moult.
- B Both look like the adults.
- C Both do not have wings.
- D Both will go through the pupa stage.

- A) A and B only
- ✓ B) A and C only
- C) C and B only
- D) C and D only

**Question Type:** Multiple Choice  
**Randomize Answers:** No  
**Date Added:** Wed 1st Sep 2021  
**Last Modified:** Mon 6th Sep 2021  
**QID#:** 28,883,899

[Answers](#) | [Edit](#) | [Duplicate](#) | [Used In](#) | [Reorder](#)

[Remove From Test](#)

## Question 4

Primary 5 Science » Primary 5 Science (Term 4)

2 pts

What is the similarity between sexual reproduction of flowering plants and humans?

- A) They involve fertilization of the ovules
- B) Pollination must take place before fertilisation
- C) Reproductive cells are produced in the anthers
- ✓ D) Fertilisation occurs at the female reproductive part

**Question Type:** Multiple Choice  
**Randomize Answers:** No  
**Date Added:** Wed 1st Sep 2021  
**Last Modified:** N/A  
**QID#:** 28,883,907

[Answers](#) | [Edit](#) | [Duplicate](#) | [Used In](#) | [Reorder](#)

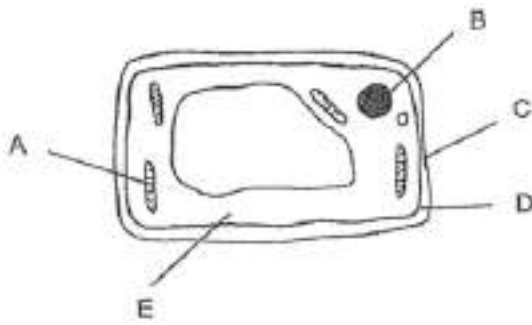
[Remove From Test](#)

## Question 5

Primary 5 Science » Primary 5 Science (Term 4)

2 pts

The diagram below shows parts of a cell.



Which of the following is correct?

	Can only be found in plant cells	Can be found in both plant and animal cells	Allow certain substances to pass through the cell
(1)	B	A and E	C
(2)	B, C	A, D and E	C
(3)	A, C	B, D and E	D
(4)	A, C	C, D and E	D

- A) 1
- B) 2
- ✓ C) 3
- D) 4

**Question Type:** Multiple Choice  
**Randomize Answers:** No  
**Date Added:** Wed 1st Sep 2021  
**Last Modified:** Mon 6th Sep 2021  
**QID#:** 28,883,910

[Answers](#) | 
 [Edit](#) | 
 [Duplicate](#) | 
 [Used In](#) | 
 [Reorder](#)

[Remove From Test](#)

### Question 6

Primary 5 Science » Primary 5 Science (Term 4)

2 pts

Which part of the cell controls most of the activities?

- A) cell wall
- ✓ B) nucleus
- C) cytoplasm
- D) chloroplast

**Question Type:** Multiple Choice  
**Randomize Answers:** No  
**Date Added:** Wed 1st Sep 2021  
**Last Modified:** N/A  
**QID#:** 28,883,915

[Answers](#) | 
 [Edit](#) | 
 [Duplicate](#) | 
 [Used In](#) | 
 [Reorder](#)

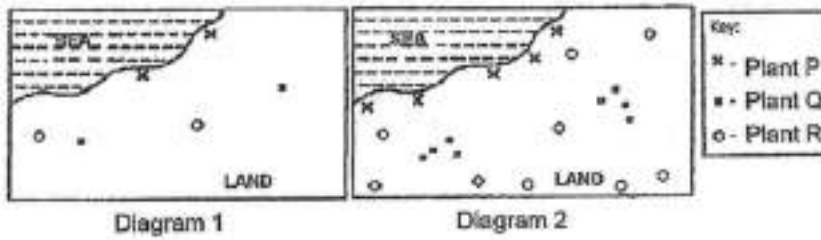
[Remove From Test](#)

### Question 7

Primary 5 Science » Primary 5 Science (Term 4)

2 pts

Three types of plants P, Q and R were planted along the coast of an island as shown in Diagram 1. After a few years, more plants were found growing at different parts of the island as shown in Diagram 2.



Which of the following best represent how the fruits and seeds of each type of plant are dispersed?

	Plant P	Plant Q	Plant R
(1)	By water	By splitting	By animals
(2)	By water	By animals	By splitting
(3)	By wind	By water	By animals
(4)	By splitting	By animals	By water

- ✓ A) 1
- B) 2
- C) 3
- D) 4

Question Type: Multiple Choice  
 Randomize Answers: No  
 Date Added: Wed 1st Sep 2021  
 Last Modified: Mon 6th Sep 2021  
 QID#: 28,883,922

[Answers](#) | 
 [Edit](#) | 
 [Duplicate](#) | 
 [Used In](#) | 
 [Reorder](#)

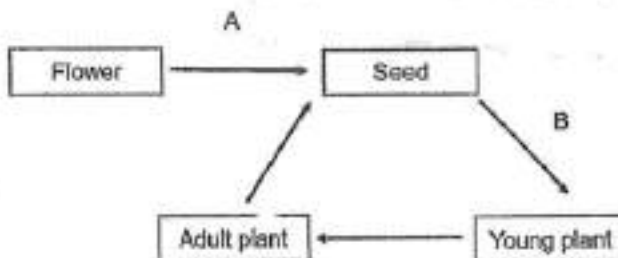
[Remove From Test](#)

### Question 8

Primary 5 Science » Primary 5 Science (Term 4)

2 pts

A flowering plant undergoes processes A and B as shown below.



Which of the following correctly represent the processes A and B?

	A	B
(1)	Fertilisation	Germination
(2)	Dispersal	Fertilisation
(3)	Pollination	Fertilisation
(4)	Fertilisation	Pollination

- ✓ A) 1
- B) 2
- C) 3
- D) 4

**Question Type:** Multiple Choice  
**Randomize Answers:** No  
**Date Added:** Wed 1st Sep 2021  
**Last Modified:** Mon 6th Sep 2021  
**QID#:** 28,883,924

[Answers](#) | [Edit](#) | [Duplicate](#) | [Used In](#) | [Reorder](#)

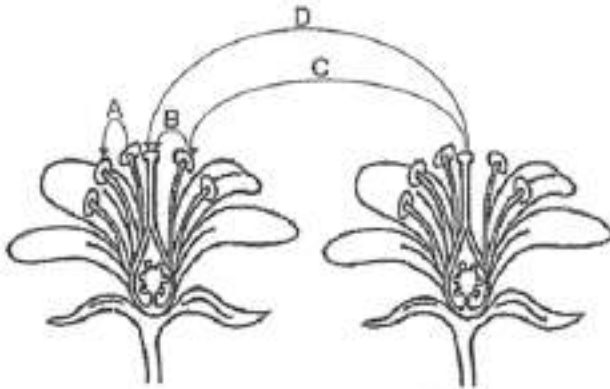
[Remove From Test](#)

## Question 9

Primary 5 Science » Primary 5 Science (Term 4)

2 pts

The diagram below shows two flowers of the same species.



Which arrow shows pollination?

- A) A
- ✓ B) B
- C) C
- D) D

**Question Type:** Multiple Choice  
**Randomize Answers:** No  
**Date Added:** Wed 1st Sep 2021  
**Last Modified:** Mon 6th Sep 2021  
**QID#:** 28,883,928

[Answers](#) | [Edit](#) | [Duplicate](#) | [Used In](#) | [Reorder](#)

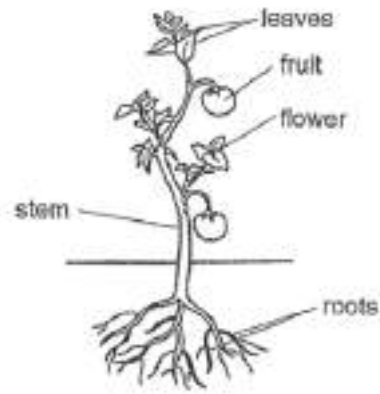
[Remove From Test](#)

## Question 10

Primary 5 Science » Primary 5 Science (Term 4)

2 pts

The diagram below shows a plant.



Which parts of the plant will food made by the leaves be transported to?

- A) Stem and root only
- B) Stem, fruit and root only
- C) Stem, fruit and flower only
- ✓ D) Stem, fruit, root and flower

**Question Type:** Multiple Choice  
**Randomize Answers:** No  
**Date Added:** Wed 1st Sep 2021  
**Last Modified:** Mon 6th Sep 2021  
**QID#:** 28,883,932

[Answers](#) | [Edit](#) | [Duplicate](#) | [Used In](#) | [Reorder](#)

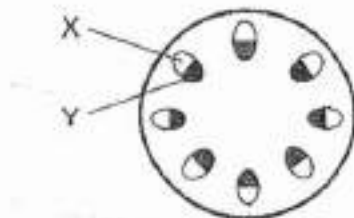
[Remove From Test](#)

## Question 11

Primary 5 Science » Primary 5 Science (Term 4)

2 pts

Umar removed the root of a plant and put it into a flask of red-coloured water for two days. After that, he cut the stem of the plant and observed the cross-section of the stem as shown below.



Umar observed that part Y turned red but not part X. Which of the following best explains his observation?

- A) Part X transports food from the roots to all parts of the plant
- ✓ B) Part Y transports water from the roots to all parts of the plant
- C) Part X transports food from the leaves to all parts of the plant
- D) Part Y transports water from the leaves to all parts of the plant

**Question Type:** Multiple Choice  
**Randomize Answers:** No  
**Date Added:** Wed 1st Sep 2021  
**Last Modified:** Mon 6th Sep 2021  
**QID#:** 28,883,944

[Answers](#) | [Edit](#) | [Duplicate](#) | [Used In](#) | [Reorder](#)

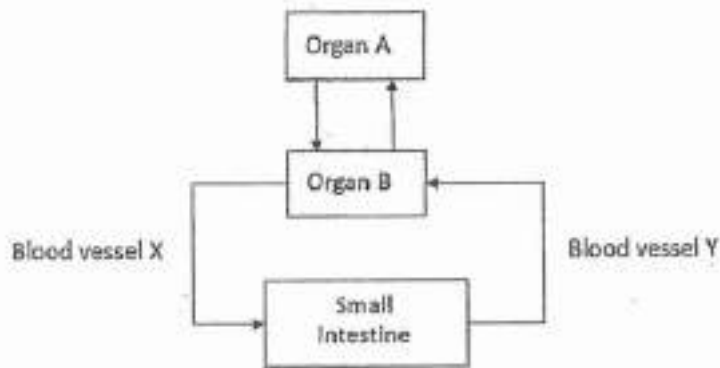
[Remove From Test](#)

## Question 12

Primary 5 Science » Primary 5 Science (Term 4)

2 pts

The chart below shows how substances are transported in the human body.



Which of the following is correct?

	Organ A	Organ B	Carbon dioxide at X compared to Y	Digested food at Y compared to X
(1)	Lungs	Heart	More	More
(2)	Lungs	Heart	Less	More
(3)	Heart	Lungs	More	Less
(4)	Heart	Lungs	Less	Less

- A) 1  
 ✓ B) 2  
 C) 3  
 D) 4

**Question Type:** Multiple Choice  
**Randomize Answers:** No  
**Date Added:** Wed 1st Sep 2021  
**Last Modified:** Mon 6th Sep 2021  
**QID#:** 28,883,948

[Answers](#) | [Edit](#) | [Duplicate](#) | [Used In](#) | [Reorder](#)

[Remove From Test](#)

## Question 13

Primary 5 Science » Primary 5 Science (Term 4)

2 pts

Which of the following statements about the human circulatory system are correct?

- A Blood vessels carry blood rich in carbon dioxide from the lungs to the heart  
 B Blood vessels carry blood rich in oxygen from the lungs to the heart  
 C The heart is an organ that pumps blood containing substances to all parts of the body  
 D The digestive system digests food and the digested food is absorbed by the blood and transported to all parts of the body

- A) A and C only



- B) B and C only
- C) A, B and D only
- ✓ D) B, C and D only

**Question Type:** Multiple Choice  
**Randomize Answers:** No  
**Date Added:** Wed 1st Sep 2021  
**Last Modified:** N/A  
**QID#:** 28,883,963

[Answers](#) | 
 [Edit](#) | 
 [Duplicate](#) | 
 [Used In](#) | 
 [Reorder](#)

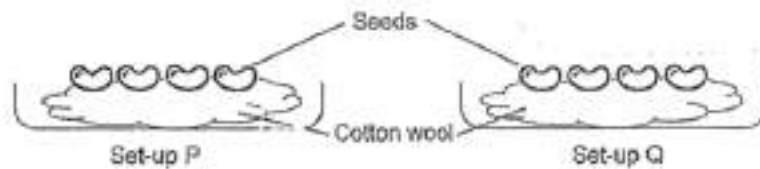
[Remove From Test](#)

## Question 14

Primary 5 Science » Primary 5 Science (Term 4)

2 pts

Raju prepared two set-ups, P and Q, as shown in the diagram below. He only changed one variable in the experiment.



After 4 days, Raju noticed that all the seeds in both set-ups germinated. Which of the following is the changed variable?

- ✓ A) presence of light
- B) presence of water
- C) presence of oxygen
- D) presence of warmth

**Question Type:** Multiple Choice  
**Randomize Answers:** No  
**Date Added:** Wed 1st Sep 2021  
**Last Modified:** Mon 6th Sep 2021  
**QID#:** 28,883,970

[Answers](#) | 
 [Edit](#) | 
 [Duplicate](#) | 
 [Used In](#) | 
 [Reorder](#)

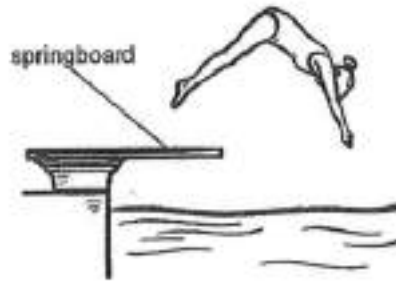
[Remove From Test](#)

## Question 15

Primary 5 Science » Primary 5 Science (Term 4)

2 pts

The diagram below shows a girl diving from a springboard at a swimming pool.



Which properties of material are important for making the springboard?

	Flexible	Strong	Waterproof
(1)	✓	✓	
(2)		✓	✓
(3)	✓		✓
(4)	✓	✓	✓

- A) 1
- B) 2
- C) 3
- ✓ D) 4

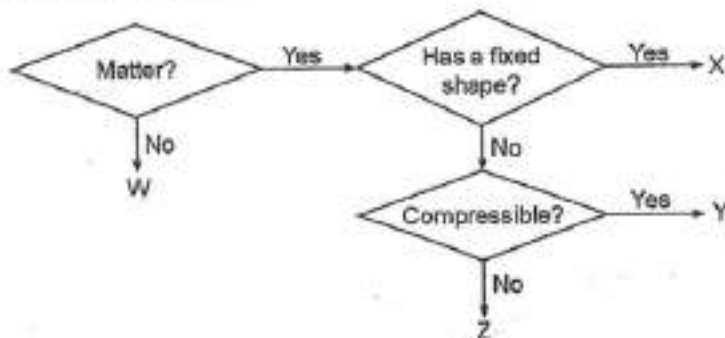
Question Type: Multiple Choice  
 Randomize Answers: No  
 Date Added: Wed 1st Sep 2021  
 Last Modified: Mon 6th Sep 2021  
 QID#: 28,883,973

[Answers](#) | 
 [Edit](#) | 
 [Duplicate](#) | 
 [Used In](#) | 
 [Reorder](#)
[Remove From Test](#)

### Question 16

Primary 5 Science » Primary 5 Science (Term 4) 2 pts

Study the diagram below.



Which of the following correctly identify substances W, X, Y and Z?

	W	X	Y	Z
(1)	heat	glass	sand	water vapour
(2)	light	nitrogen	paper	iron
(3)	air	wood	plastic	steel
(4)	shadow	stone	oxygen	water

- A) 1

- B) 2
- C) 3
- ✓ D) 4

**Question Type:** Multiple Choice  
**Randomize Answers:** No  
**Date Added:** Wed 1st Sep 2021  
**Last Modified:** Mon 6th Sep 2021  
**QID#:** 28,883,977

[Answers](#) | [Edit](#) | [Duplicate](#) | [Used In](#) | [Reorder](#)

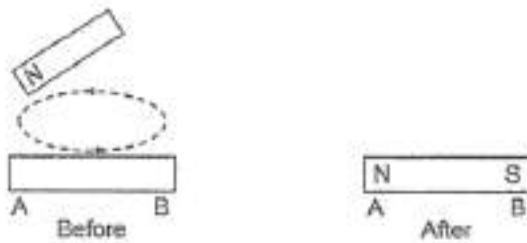
[Remove From Test](#)

### Question 17

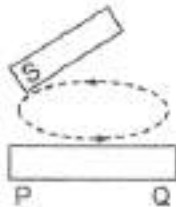
Primary 5 Science » Primary 5 Science (Term 4)

2 pts

The diagram below shows an iron bar AB that is magnetised using the stroking method.



Another iron bar, PQ, was magnetised using the same magnet.



Which one of the following diagrams shows a possible arrangement of iron bars AB and PQ after they were magnetised?

- A)
- B)
- C)
- ✓ D)

**Question Type:** Multiple Choice  
**Randomize Answers:** No  
**Date Added:** Wed 1st Sep 2021  
**Last Modified:** Mon 6th Sep 2021  
**QID#:** 28,883,996

[Answers](#) | [Edit](#) | [Duplicate](#) | [Used In](#) | [Reorder](#)

[Remove From Test](#)

## Question 18

Primary 5 Science » Primary 5 Science (Term 4)

2 pts

The diagram below shows a plastic ball before and after it has been dented. There was no hole on the ball.



Which of the following correctly represent the volume and mass of air in the plastic ball before and after it has been dented?

	Before		After	
	Volume of ball (cm <sup>3</sup> )	Mass of ball (g)	Volume of ball (cm <sup>3</sup> )	Mass of ball (g)
(1)	155	97	140	97
(2)	155	97	140	93
(3)	155	97	155	97
(4)	155	97	155	93

- ✓ A) 1  
 B) 2  
 C) 3  
 D) 4

**Question Type:** Multiple Choice  
**Randomize Answers:** No  
**Date Added:** Wed 1st Sep 2021  
**Last Modified:** Mon 6th Sep 2021  
**QID#:** 28,884,001

[Answers](#) | [Edit](#) | [Duplicate](#) | [Used In](#) | [Reorder](#)

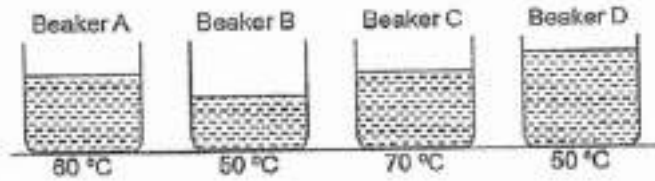
[Remove From Test](#)

## Question 19

Primary 5 Science » Primary 5 Science (Term 4)

2 pts

Josiah wanted to investigate how the amount of heat in water is affected by its volume. Four identical beakers, A, B, C and D, were filled with different volume of water and heated to different temperatures.



Which beakers should he choose to conduct the experiment?

- A) A and C only
- B) A and D only
- ✓ C) B and D only
- D) C and D only

**Question Type:** Multiple Choice  
**Randomize Answers:** No  
**Date Added:** Wed 1st Sep 2021  
**Last Modified:** Mon 6th Sep 2021  
**QID#:** 28,884,006

[Answers](#) | [Edit](#) | [Duplicate](#) | [Used In](#) | [Reorder](#)

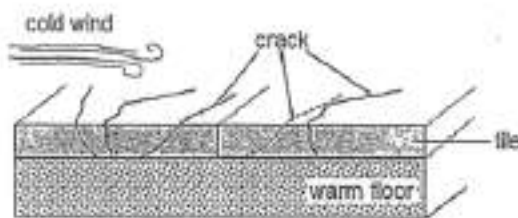
[Remove From Test](#)

## Question 20

Primary 5 Science » Primary 5 Science (Term 4)

2 pts

When air becomes very cold suddenly, cracks appeared on the pavement.



Which of the following explain how the change in temperature caused the pavement to crack?

- A) The cold wind caused the top of tile to expand.
  - B) The cold wind caused the top of tile to contract.
  - C) The warm floor caused the bottom of tile to expand.
  - D) The warm floor caused the bottom of tile to contract.
- A) A and C only
  - B) A and D only
  - ✓ C) B and C only
  - D) B and D only

**Question Type:** Multiple Choice  
**Randomize Answers:** No

Date Added: Wed 1st Sep 2021  
 Last Modified: Mon 6th Sep 2021  
 QID#: 28,884,010

[Answers](#) | [Edit](#) | [Duplicate](#) | [Used In](#) | [Reorder](#)

[Remove From Test](#)

## Question 21

Primary 5 Science » Primary 5 Science (Term 4)

1 pt

Vasu shone a torch on a vase and the shadow was cast onto the screen.



If Vasu wanted to make the shadow of the vase bigger, he should \_\_\_\_\_.

- A) move the torch nearer to the vase
- B) move the screen nearer to the vase
- C) move the torch further away from the vase
- D) move the screen further away from the vase

- A) A and B only
- ✓ B) A and C only
- C) B and C only
- D) B and D only

Question Type: Multiple Choice  
 Randomize Answers: No  
 Date Added: Mon 6th Sep 2021  
 Last Modified: N/A  
 QID#: 28,928,385

[Answers](#) | [Edit](#) | [Duplicate](#) | [Used In](#) | [Reorder](#)

[Remove From Test](#)

## Question 22

Primary 5 Science » Primary 5 Science (Term 4)

1 pt

The diagram below shows the change in state of water.



What is process P?

- A) Boiling
- B) Freezing
- C) Evaporation
- ✓ D) Condensation

**Question Type:** Multiple Choice  
**Randomize Answers:** No  
**Date Added:** Mon 6th Sep 2021  
**Last Modified:** N/A  
**QID#:** 28,928,387

[Answers](#) | [Edit](#) | [Duplicate](#) | [Used In](#) | [Reorder](#)

[Remove From Test](#)

## Question 23

Primary 5 Science » Primary 5 Science (Term 4)

2 pts

The table below shows the melting points and boiling points of four substances, J, K, L and M,

Substance	Melting point (°C)	Boiling Point (°C)
J	0	100
K	10	85
L	25	110
M	50	180

At which temperature would all the substances be in the same state?

- A) 0
- B) 30
- ✓ C) 80
- D) 160

**Question Type:** Multiple Choice  
**Randomize Answers:** No  
**Date Added:** Mon 6th Sep 2021  
**Last Modified:** N/A  
**QID#:** 28,928,404

[Answers](#) | [Edit](#) | [Duplicate](#) | [Used In](#) | [Reorder](#)

[Remove From Test](#)

## Question 24

Primary 5 Science » Primary 5 Science (Term 4)

2 pts

Yasmin placed four containers, P, Q, R and S, filled with 250 ml of water in the school field. She measured the amount of water left in each container at the end of the day and recorded the results in the following table.

Container	Amount of water left at the end of the day (ml)
P	150
Q	175
R	190
S	175

Which of the following statements are correct?

- A Container P has the lowest rate of evaporation.
- B More water is evaporated from container S than R.
- C Container R has the largest exposed surface area of water.
- D The rate of evaporation of water in container Q and S is the same.

- A) A and C only
- ✓ B) B and D only
- C) A, C and D only
- D) B, C and D only

**Question Type:** Multiple Choice  
**Randomize Answers:** No  
**Date Added:** Mon 6th Sep 2021  
**Last Modified:** N/A  
**QID#:** 28,928,406

[Answers](#) | [Edit](#) | [Duplicate](#) | [Used In](#) | [Reorder](#)

[Remove From Test](#)

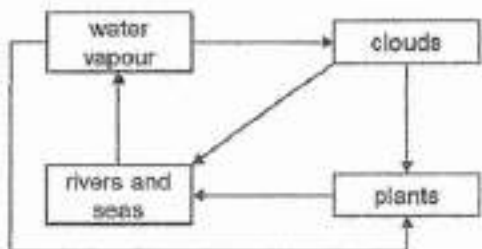
## Question 25

Primary 5 Science » Primary 5 Science (Term 4)

2 pts

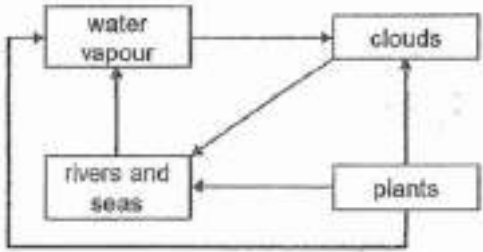
Which one of the following shows how plants play a part in the water cycle?

A)

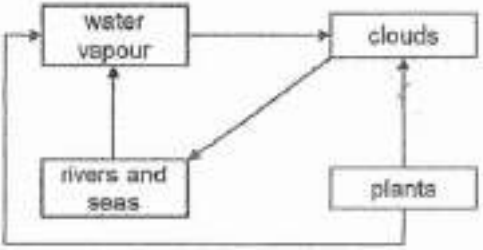


B)

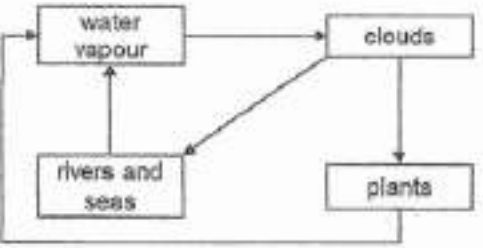




C)



✓ D)



**Question Type:** Multiple Choice  
**Randomize Answers:** No  
**Date Added:** Mon 6th Sep 2021  
**Last Modified:** N/A  
**QID#:** 28,928,413

[Answers](#) | [Edit](#) | [Duplicate](#) | [Used In](#) | [Reorder](#)

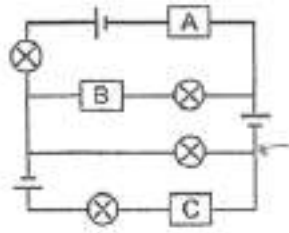
[Remove From Test](#)

### Question 26

Primary 5 Science » Primary 5 Science (Term 4)

2 pts

Three materials, A, B and C, are connected in an electric circuit and only two bulbs lit up.



Which of the following best represent materials A, B and C?

	A	B	C
(1)	iron	copper	wood
(2)	plastic	iron	copper
(3)	wood	plastic	copper
(4)	copper	wood	iron

- A) 1
- B) 2
- ✓ C) 3
- D) 4

**Question Type:** Multiple Choice  
**Randomize Answers:** No  
**Date Added:** Mon 6th Sep 2021  
**Last Modified:** N/A  
**QID#:** 28,928,422

[Answers](#) | [Edit](#) | [Duplicate](#) | [Used In](#) | [Reorder](#)

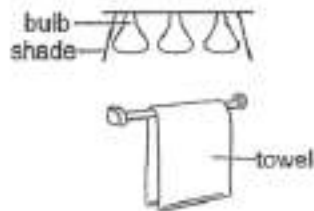
[Remove From Test](#)

### Question 27

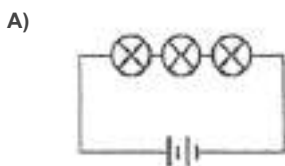
Primary 5 Science » Primary 5 Science (Term 4)

2 pts

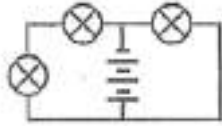
The diagram below shows three identical light bulbs of a lamp in the bathroom.



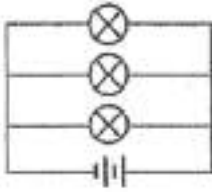
Which one of the following circuits should be used for the lamp so that the towel will dry in the shortest time?



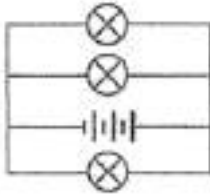
B)



C)



✓ D)



**Question Type:** Multiple Choice  
**Randomize Answers:** No  
**Date Added:** Mon 6th Sep 2021  
**Last Modified:** N/A  
**QID#:** 28,928,428

[Answers](#) | [Edit](#) | [Duplicate](#) | [Used In](#) | [Reorder](#)

[Remove From Test](#)

### Question 28

Primary 5 Science » Primary 5 Science (Term 4)

2 pts

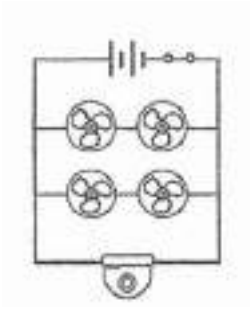
The diagram below shows a drone. When the switch is closed, the camera and propellers are turned on.



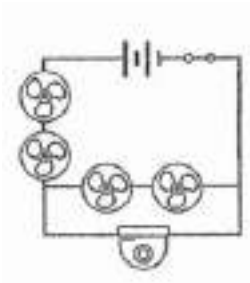
When a propeller stopped working, only the camera continue to work.

Which one of the following electrical circuit diagrams shows the connection of the camera and the propellers?

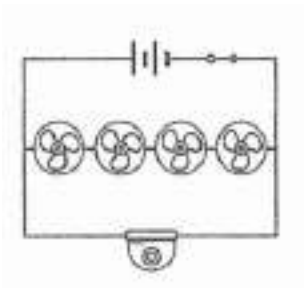
A)



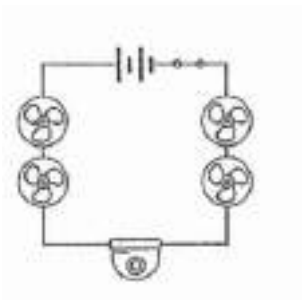
B)



✓ C)



D)



**Question Type:** Multiple Choice  
**Randomize Answers:** No  
**Date Added:** Mon 6th Sep 2021  
**Last Modified:** N/A  
**QID#:** 28,928,441

[Answers](#) | [Edit](#) | [Duplicate](#) | [Used In](#) | [Reorder](#)

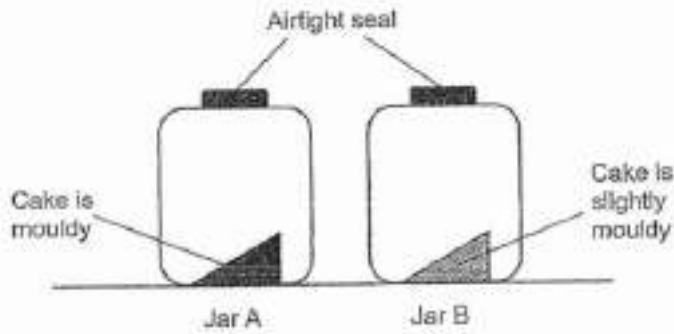
[Remove From Test](#)

### Question 29

Primary 5 Science » Primary 5 Science (Term 4)

2 pts

Hannah put two pieces of cakes into two identical jars, A and B and added a few drops of water to the cake in jar A. She ensured that the jars were airtight sealed so that no air could enter the jars. The diagram below shows the results of her experiment after three days.



Which group of living thing does mould belong to?

[1]

**Accepted answers:**

✓ fungi

**Question Type:** Free Text  
**Date Added:** Mon 6th Sep 2021  
**Last Modified:** N/A  
**QID#:** 28,928,442

[Answers](#) | [Edit](#) | [Duplicate](#) | [Used In](#) | [Reorder](#)

[Remove From Test](#)

## Question 30

Primary 5 Science » Primary 5 Science (Term 4)

0 pts

b) Why does Hannah have to use airtight jars to ensure that the experiment is a fair test? Explain your answer

**Question Type:** Essay  
**Date Added:** Mon 6th Sep 2021  
**Last Modified:** N/A  
**QID#:** 28,928,463

**Correctly answered feedback**

To ensure the amount of air in both jars A and B is the same so that the only changed variable is the presence of water

**Incorrectly answered feedback**

To ensure the amount of air in both jars A and B is the same so that the only changed variable is the presence of water

[Answers](#) | [Edit](#) | [Duplicate](#) | [Used In](#) | [Reorder](#)

[Remove From Test](#)

## Question 31

Primary 5 Science » Primary 5 Science (Term 4)

0 pts

c) Hannah repeated her experiment by using a third piece of cake she heated in an oven. She observed that the cake did not turn mouldy after three days. Give a reason for Hannah's observation

**Question Type:** Essay  
**Date Added:** Mon 6th Sep 2021  
**Last Modified:** N/A  
**QID#:** 28,928,472

**Correctly answered feedback**

The cake had no moisture so mould could not grow on it as mould needs water to grow. Hence, the cake that was heated did not grow mould

**Incorrectly answered feedback**

The cake had no moisture so mould could not grow on it as mould needs water to grow. Hence, the cake that was heated did not grow mould

[Answers](#) | [Edit](#) | [Duplicate](#) | [Used In](#) | [Reorder](#)

[Remove From Test](#)

**Question 32**

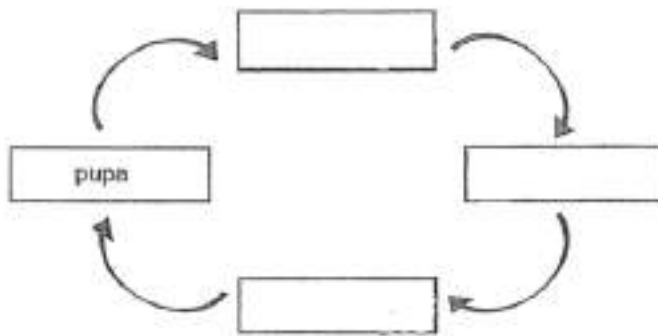
Primary 5 Science » Primary 5 Science (Term 4)

0 pts

Aaliyah studied the life cycle of an insect P.

Complete the life cycle of insect P by writing down the stages in the correct order.

[1]



**Question Type:** Essay  
**Date Added:** Mon 6th Sep 2021  
**Last Modified:** Mon 13th Sep 2021  
**QID#:** 28,928,481

**Correctly answered feedback**

egg -> larva --> pupa --> adult

**Incorrectly answered feedback**

egg -> larva --> pupa --> adult

[Answers](#) | [Edit](#) | [Duplicate](#) | [Used In](#) | [Reorder](#)

[Remove From Test](#)

**Question 33**

Primary 5 Science » Primary 5 Science (Term 4)

0 pts

b) can insect be a cockroach ? Explain your answer

**Question Type:** Essay  
**Date Added:** Mon 6th Sep 2021  
**Last Modified:** N/A  
**QID#:** 28,928,499

**Correctly answered feedback**

No. Cockroach has a 3-stage life cycle whereas insect P has a 4 stage life cycle. Hence, insect P cannot be a cockroach

**Incorrectly answered feedback**

No. Cockroach has a 3-stage life cycle whereas insect P has a 4 stage life cycle. Hence, insect P cannot be a cockroach

[Answers](#) | [Edit](#) | [Duplicate](#) | [Used In](#) | [Reorder](#)

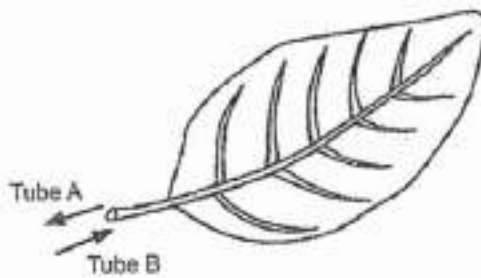
[Remove From Test](#)

**Question 34**

Primary 5 Science » Primary 5 Science (Term 4)

0 pts

The diagram below shows a leaf from a plant.



Substances are transported in tubes A and B. Name the tubes.

A: \_\_\_\_\_

B: \_\_\_\_\_

**Question Type:** Essay  
**Date Added:** Mon 6th Sep 2021  
**Last Modified:** N/A  
**QID#:** 28,928,505

**Correctly answered feedback**

A: Food carrying tube  
 B: Water carrying tube

**Incorrectly answered feedback**

A: Food carrying tube  
 B: Water carrying tube

[Answers](#) | [Edit](#) | [Duplicate](#) | [Used In](#) | [Reorder](#)

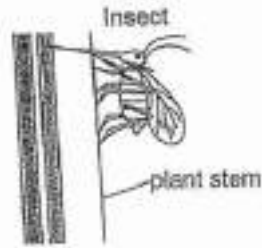
[Remove From Test](#)

**Question 35**

Primary 5 Science » Primary 5 Science (Term 4)

0 pts

An insect is feeding on the sap of the plant as shown below.



- (b) Explain why the growth of the plant roots can be affected when the insect feeds on the sap. [2]

Question Type: Essay

Date Added: Mon 6th Sep 2021

Last Modified: N/A

QID#: 28,928,512

#### Correctly answered feedback

The roots would not be able to receive the food made by the leaves as the insect was sapping on the food, so the roots unable to absorb water

#### Incorrectly answered feedback

The roots would not be able to receive the food made by the leaves as the insect was sapping on the food, so the roots unable to absorb water

[Answers](#) | [Edit](#) | [Duplicate](#) | [Used In](#) | [Reorder](#)

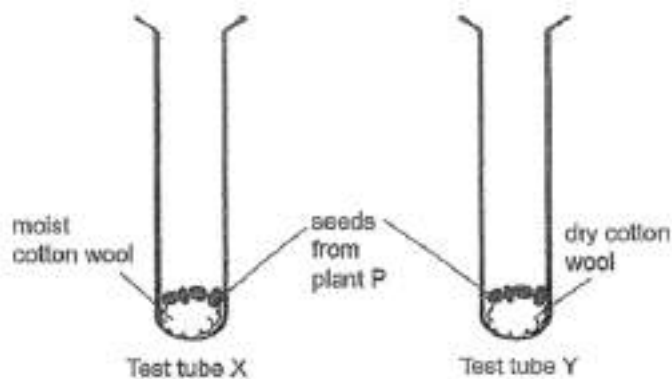
[Remove From Test](#)

## Question 36

Primary 5 Science » Primary 5 Science (Term 4)

0 pts

Bala carried out an experiment to investigate seed germination of plant P as shown in the diagram below.



- During the experiment, the cotton wool in test tube X was kept moist, while the cotton wool in test tube Y was kept dry.
- (i) Bala decided to put the test tubes on a table near the windows. Explain why the location is suitable for Bala's experiment. [1]

Question Type: Essay

Date Added: Mon 6th Sep 2021



Last Modified: N/A  
QID#: 28,928,517

**Correctly answered feedback**

To ensure there is warmth

**Incorrectly answered feedback**

To ensure there is warmth

[Answers](#) | [Edit](#) | [Duplicate](#) | [Used In](#) | [Reorder](#)

[Remove From Test](#)

## Question 37

Primary 5 Science » Primary 5 Science (Term 4)

0 pts

ii) In which test tube, X or Y, would the seeds germinate? Explain your answer

**Question Type:** Essay  
**Date Added:** Mon 6th Sep 2021  
**Last Modified:** N/A  
**QID#:** 28,928,521

**Correctly answered feedback**

Test tube x. The conditions needed for seeds to germinate is warmth, oxygen and water which test tube X has. Hence, test tube X seeds would germinate

**Incorrectly answered feedback**

Test tube x. The conditions needed for seeds to germinate is warmth, oxygen and water which test tube X has. Hence, test tube X seeds would germinate

[Answers](#) | [Edit](#) | [Duplicate](#) | [Used In](#) | [Reorder](#)

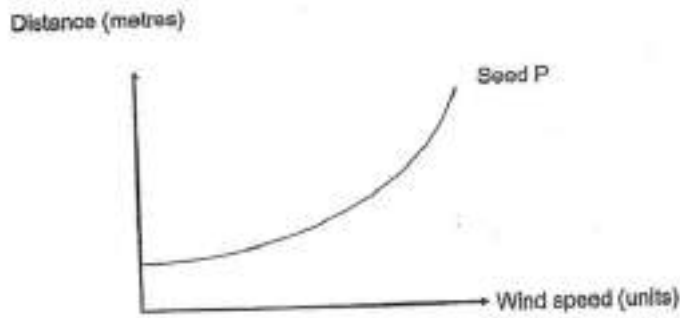
[Remove From Test](#)

## Question 38

Primary 5 Science » Primary 5 Science (Term 4)

0 pts

Bala then plotted the graph below to show how wind speed can affect the distance traveled by the seed P.



A



B



C

- (b) Based on the graph above, which fruit A, B or C, does seed P belong to? Explain your answer. [1]

**Question Type:** Essay  
**Date Added:** Mon 6th Sep 2021  
**Last Modified:** N/A  
**QID#:** 28,928,559

#### Correctly answered feedback

Fruit C. As the windspeed increases, the distance travelled by seed P increases. Fruit C is wing like structure and light, easily carried by the wind. Therefore, seed p is belong to fruit C

#### Incorrectly answered feedback

Fruit C. As the windspeed increases, the distance travelled by seed P increases. Fruit C is wing like structure and light, easily carried by the wind. Therefore, seed p is belong to fruit C

[Answers](#) | [Edit](#) | [Duplicate](#) | [Used In](#) | [Reorder](#)

[Remove From Test](#)

## Question 39

Primary 5 Science » Primary 5 Science (Term 4)

0 pts

c) Seed dispersal is one of the many processes involved in plant reproduction. Explain why seed dispersal is important

**Question Type:** Essay  
**Date Added:** Mon 6th Sep 2021  
**Last Modified:** N/A  
**QID#:** 28,928,568

#### Correctly answered feedback

To reduce overcrowding and less competition for space, water, sunlight and mineral salts

#### Incorrectly answered feedback

To reduce overcrowding and less competition for space, water, sunlight and mineral salts

[Answers](#) | [Edit](#) | [Duplicate](#) | [Used In](#) | [Reorder](#)

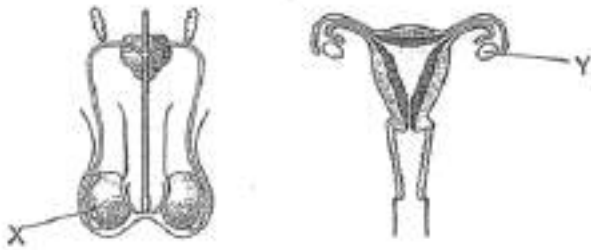
[Remove From Test](#)

## Question 40

Primary 5 Science » Primary 5 Science (Term 4)

1 pt

The diagram below shows the male and female reproductive systems in humans.



Name organ X and organ Y.

[1]

Organ X: \_\_\_\_\_

Accepted answers:

✓ testis

**Question Type:** Free Text  
**Date Added:** Mon 6th Sep 2021  
**Last Modified:** N/A  
**QID#:** 28,928,573

[Answers](#) | [Edit](#) | [Duplicate](#) | [Used In](#) | [Reorder](#)

[Remove From Test](#)

## Question 41

Primary 5 Science » Primary 5 Science (Term 4)

1 pt

Organ Y: \_\_\_\_\_

Accepted answers:

✓ ovary

**Question Type:** Free Text  
**Date Added:** Mon 6th Sep 2021  
**Last Modified:** N/A  
**QID#:** 28,928,579

[Answers](#) | [Edit](#) | [Duplicate](#) | [Used In](#) | [Reorder](#)

[Remove From Test](#)

## Question 42

Primary 5 Science » Primary 5 Science (Term 4)

0 pts

b) Which part of a flower has the same function as part X? Explain your answer

**Question Type:** Essay  
**Date Added:** Mon 6th Sep 2021  
**Last Modified:** N/A  
**QID#:** 28,928,585

**Correctly answered feedback**

Anther. The anther and part X produce the male sex cell

**Incorrectly answered feedback**

Anther. The anther and part X produce the male sex cell

[Answers](#) | [Edit](#) | [Duplicate](#) | [Used In](#) | [Reorder](#)

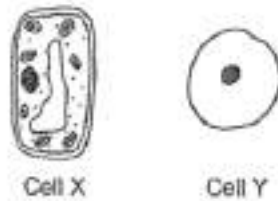
[Remove From Test](#)

**Question 43**

Primary 5 Science » Primary 5 Science (Term 4)

0 pts

The diagram below shows two cells.



Cell X

Cell Y

- (i) Which of the cells, X or Y, is taken from the cheek of a human? Give a reason for your answer. [1]

**Question Type:** Essay

**Date Added:** Mon 6th Sep 2021

**Last Modified:** N/A

**QID#:** 28,928,590

**Correctly answered feedback**

Cell Y. Cell X comes from the plant as the cell has a cell wall and chloroplasts, unlike, cell Y is taken from the cheek of a human

**Incorrectly answered feedback**

Cell Y. Cell X comes from the plant as the cell has a cell wall and chloroplasts, unlike, cell Y is taken from the cheek of a human

[Answers](#) | [Edit](#) | [Duplicate](#) | [Used In](#) | [Reorder](#)

[Remove From Test](#)

**Question 44**

Primary 5 Science » Primary 5 Science (Term 4)

0 pts

- ii) Which plant part is cell X taken from? Explain your answer

**Question Type:** Essay

**Date Added:** Mon 6th Sep 2021

**Last Modified:** N/A

**QID#:** 28,928,598

**Correctly answered feedback**

Leaf. Cell X has chloroplasts which has chlorophyll to trap sunlight for photosynthesis

**Incorrectly answered feedback**

Leaf. Cell X has chloroplasts which has chlorophyll to trap sunlight for photosynthesis

[Answers](#) | 
 [Edit](#) | 
 [Duplicate](#) | 
 [Used In](#) | 
 [Reorder](#)

[Remove From Test](#)

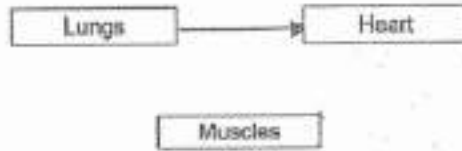
## Question 45

Primary 5 Science » Primary 5 Science (Term 4)

0 pts

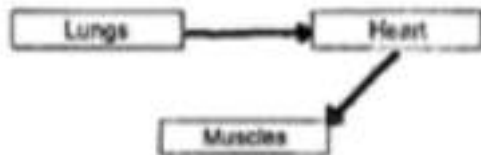
Ali wants to find out how his average heart rate changes when he runs.

Three organs of the body are shown below. Draw two arrows (  $\longrightarrow$  ) in the diagram below to show how blood rich in oxygen is transported through the organs. [1]

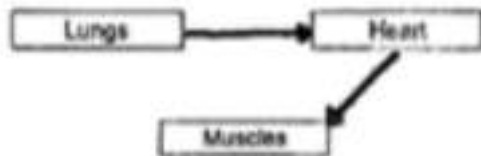


**Question Type:** Essay  
**Date Added:** Mon 6th Sep 2021  
**Last Modified:** N/A  
**QID#:** 28,928,604

### Correctly answered feedback



### Incorrectly answered feedback



[Answers](#) | 
 [Edit](#) | 
 [Duplicate](#) | 
 [Used In](#) | 
 [Reorder](#)

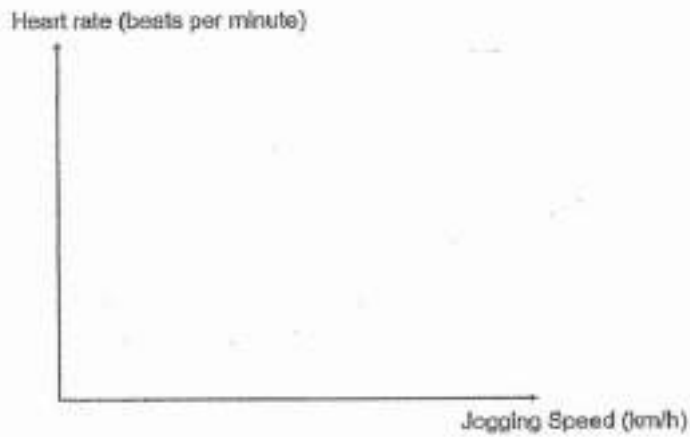
[Remove From Test](#)

## Question 46

Primary 5 Science » Primary 5 Science (Term 4)

0 pts

) The graph below shows how Ali's heart rate changes as he jogs.



(i) What is the relationship between Ali's jogging speed and his heart rate? [1]

**Question Type:** Essay  
**Date Added:** Mon 6th Sep 2021  
**Last Modified:** N/A  
**QID#:** 28,928,612

**Correctly answered feedback**

As Ali jogging speed increases, his heart rate increases

**Incorrectly answered feedback**

As Ali jogging speed increases, his heart rate increases

[Answers](#) | [Edit](#) | [Duplicate](#) | [Used In](#) | [Reorder](#)

[Remove From Test](#)

## Question 47

Primary 5 Science » Primary 5 Science (Term 4)

0 pts

ii) Explain your answer in bi

**Question Type:** Essay  
**Date Added:** Mon 6th Sep 2021  
**Last Modified:** N/A  
**QID#:** 28,928,622

**Correctly answered feedback**

When he jogged faster, blood carrying oxygen and digested food had to be pumped faster to his muscles to provide him with more energy

**Incorrectly answered feedback**

When he jogged faster, blood carrying oxygen and digested food had to be pumped faster to his muscles to provide him with more energy

[Answers](#) | [Edit](#) | [Duplicate](#) | [Used In](#) | [Reorder](#)

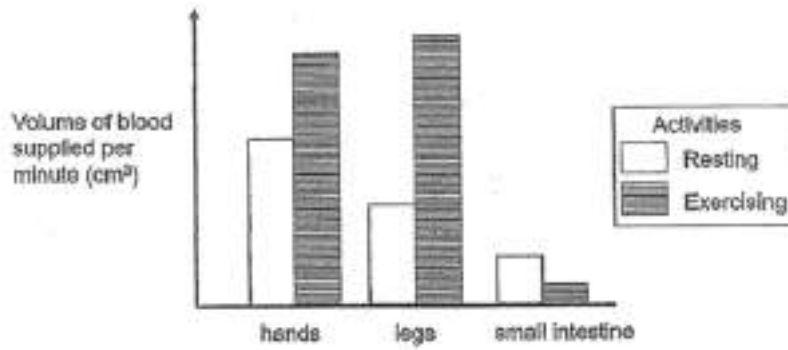
[Remove From Test](#)

## Question 48

Primary 5 Science » Primary 5 Science (Term 4)

0 pts

All carried out an experiment to measure the volume of blood supplied per minute to different parts of the human body during two activities: resting and exercising.



- (c) Based on the graph above, explain how exercising after having a meal will affect the absorption of food in the small intestine. [2]

**Question Type:** Essay  
**Date Added:** Mon 6th Sep 2021  
**Last Modified:** N/A  
**QID#:** 28,928,631

#### Correctly answered feedback

When exercising, more blood is pumped to the legs and hands while less blood is pumped to the small intestines. This will decrease the amount of digested food absorbed by the small intestine

#### Incorrectly answered feedback

When exercising, more blood is pumped to the legs and hands while less blood is pumped to the small intestines. This will decrease the amount of digested food absorbed by the small intestine

[Answers](#) | [Edit](#) | [Duplicate](#) | [Used In](#) | [Reorder](#)

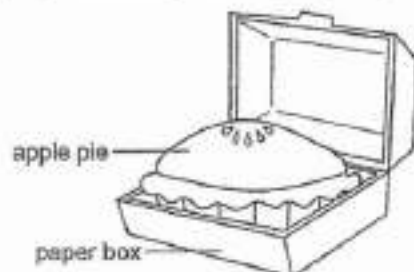
[Remove From Test](#)

## Question 49

Primary 5 Science » Primary 5 Science (Term 4)

0 pts

Felix baked an apple pie and brought it to a party in a paper box as shown below.



When she opened the paper box, she found that the inner surface of the cover and the apple pie were wet.

Explain why the apple pie became wet. [2]

**Question Type:** Essay  
**Date Added:** Mon 6th Sep 2021  
**Last Modified:** N/A  
**QID#:** 28,928,654

**Correctly answered feedback**

The water gains heat from the apple pie and becomes water vapour. The warm water vapour comes into contact with the cooler inner surface of the paper box, lost heat and condense to form water droplets before falling back into the apple pie

**Incorrectly answered feedback**

The water gains heat from the apple pie and becomes water vapour. The warm water vapour comes into contact with the cooler inner surface of the paper box, lost heat and condense to form water droplets before falling back into the apple pie

[Answers](#) | [Edit](#) | [Duplicate](#) | [Used In](#) | [Reorder](#)

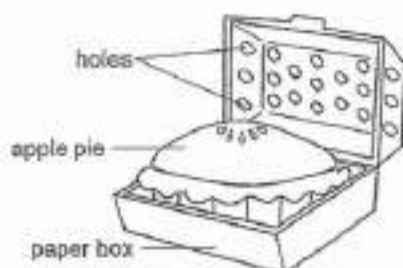
[Remove From Test](#)

**Question 50**

Primary 5 Science » Primary 5 Science (Term 4)

0 pts

Felix put another apple pie into a similar paper box. The paper box and apple pie were not damp.



(b) Give an explanation for Felix's observation.

[1]

**Question Type:** Essay  
**Date Added:** Mon 6th Sep 2021  
**Last Modified:** N/A  
**QID#:** 28,928,715

**Correctly answered feedback**

The warm water vapour in the paper box was able to escape through the holes of the box less condensation occurred

**Incorrectly answered feedback**

The warm water vapour in the paper box was able to escape through the holes of the box less condensation occurred

[Answers](#) | [Edit](#) | [Duplicate](#) | [Used In](#) | [Reorder](#)

[Remove From Test](#)

**Question 51**

Primary 5 Science » Primary 5 Science (Term 4)

0 pts



Mr Murthu is famous for making 'teh tank', or 'pulled tea'. He transferred hot tea from one container into another at a certain distance for five times and created a cup of tea with foam as shown below.



His son, Anaisha, carried out an experiment to find out if the distance between the containers,  $d$ , affects the final temperature of the 'pulled' tea. The results are as shown in the table below.

Distance, $d$ (cm)	50	60	70	80	90
Final temperature of the 'pulled tea' ( $^{\circ}\text{C}$ )	98	91	88	85	80

Based on the results, state the relationship between distance  $d$  and the final temperature of the 'pulled' tea. [1]

**Question Type:** Essay  
**Date Added:** Mon 6th Sep 2021  
**Last Modified:** N/A  
**QID#:** 28,928,737

#### Correctly answered feedback

As the distance  $D$  increases, the final temperature of the "pulled" tea decreases

#### Incorrectly answered feedback

As the distance  $D$  increases, the final temperature of the "pulled" tea decreases

[Answers](#) | [Edit](#) | [Duplicate](#) | [Used In](#) | [Reorder](#)

[Remove From Test](#)

## Question 52

Primary 5 Science » Primary 5 Science (Term 4)

0 pts

b) Explain your answer in a

**Question Type:** Essay  
**Date Added:** Mon 6th Sep 2021  
**Last Modified:** N/A  
**QID#:** 28,928,740

#### Correctly answered feedback

the distance  $D$  increases, the exposed surface area of the tea in contact with the surrounding increases, allowing the tea to lose heat faster to the surrounding air.

#### Incorrectly answered feedback

the distance  $D$  increases, the exposed surface area of the tea in contact with the surrounding increases, allowing the tea to lose heat faster to the surrounding air.

[Answers](#) | 
 [Edit](#) | 
 [Duplicate](#) | 
 [Used In](#) | 
 [Reorder](#)

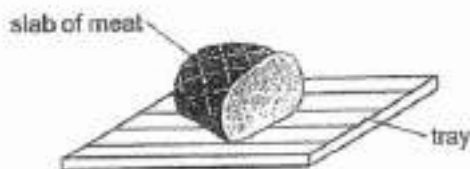
[Remove From Test](#)

## Question 53

Primary 5 Science » Primary 5 Science (Term 4)

0 pts

Alisha took a slab of frozen meat from the freezer and thawed it on a tray as shown in the diagram below. Thawing is a process by which a frozen substance becomes soft as a result of warming up.



Which tray, plastic or metal, should be used so that the slab of frozen meat can be thawed in a shorter time? Explain your answer. [1]

**Question Type:** Essay

**Date Added:** Mon 6th Sep 2021

**Last Modified:** N/A

**QID#:** 28,928,748

### Correctly answered feedback

Metal. Metal is a better conductor of heat than plastic and can warm the meat faster as heat travels from a cold place to a warm place

### Incorrectly answered feedback

Metal. Metal is a better conductor of heat than plastic and can warm the meat faster as heat travels from a cold place to a warm place

[Answers](#) | 
 [Edit](#) | 
 [Duplicate](#) | 
 [Used In](#) | 
 [Reorder](#)

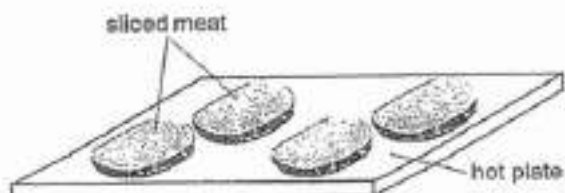
[Remove From Test](#)

## Question 54

Primary 5 Science » Primary 5 Science (Term 4)

0 pts

After the meat was thawed, Alisha cut the slab of meat into four thin slices and cooked them on a hot plate as shown in the diagram below.



Would the sliced meat cook faster or slower than the whole slab of meat on the hot plate? Explain your answer. [2]

**Question Type:** Essay

**Date Added:** Mon 6th Sep 2021

**Last Modified:** N/A

**QID#:** 28,928,758

**Correctly answered feedback**

The sliced meat would cook faster than the whole slab of meat on the whole plate. The exposed surface area of the sliced meat than the whole slab of meat larger. Therefore, heat can travel faster and cook the sliced meat faster

**Incorrectly answered feedback**

The sliced meat would cook faster than the whole slab of meat on the whole plate. The exposed surface area of the sliced meat than the whole slab of meat larger. Therefore, heat can travel faster and cook the sliced meat faster

[Answers](#) | [Edit](#) | [Duplicate](#) | [Used In](#) | [Reorder](#)

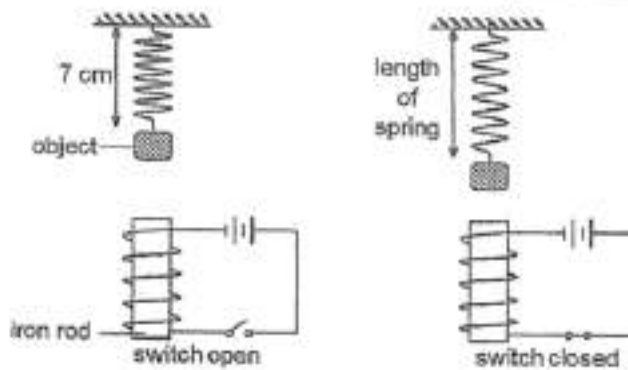
[Remove From Test](#)

**Question 55**

Primary 5 Science » Primary 5 Science (Term 4)

0 pts

Mark carried out an experiment with the set-up as shown below. Three objects A, B and C, made of different materials of the same mass, were attached to a spring.



He measured the length of the spring before and after the switch was closed and recorded the results in the table below.

Object	Length of spring when the switch was open (cm)	Length of spring after the switch was closed (cm)
A	7	7
B	7	10
C	7	5

Based on the results, which object, A, B or C, is definitely a magnet? Explain your answer. [2]

Question Type: Essay  
 Date Added: Mon 6th Sep 2021  
 Last Modified: N/A  
 QID#: 28,928,767

**Correctly answered feedback**

C. object C like poles and the electromagnet are facing each other and they repelled, causing the length of the spring to decrease

**Incorrectly answered feedback**

C. object C like poles and the electromagnet are facing each other and they repelled, causing the length of the spring to decrease

[Answers](#) | [Edit](#) | [Duplicate](#) | [Used In](#) | [Reorder](#)

[Remove From Test](#)

## Question 56

Primary 5 Science » Primary 5 Science (Term 4)

0 pts

b) Mark repeated the experiment by increasing the number of coils of wire around the iron rod and attached object B to the spring.

What would Mark observe about object B? Explain your answer

**Question Type:** Essay  
**Date Added:** Mon 6th Sep 2021  
**Last Modified:** N/A  
**QID#:** 28,928,781

**Correctly answered feedback**

The electromagnet become stronger so it attracted object B mate causing it to move closer to the electromagnet

**Incorrectly answered feedback**

The electromagnet become stronger so it attracted object B mate causing it to move closer to the electromagnet

[Answers](#) | [Edit](#) | [Duplicate](#) | [Used In](#) | [Reorder](#)

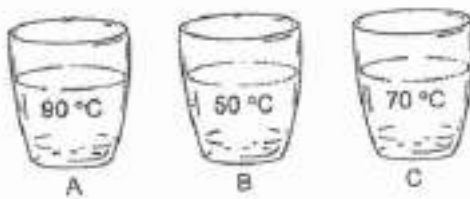
[Remove From Test](#)

## Question 57

Primary 5 Science » Primary 5 Science (Term 4)

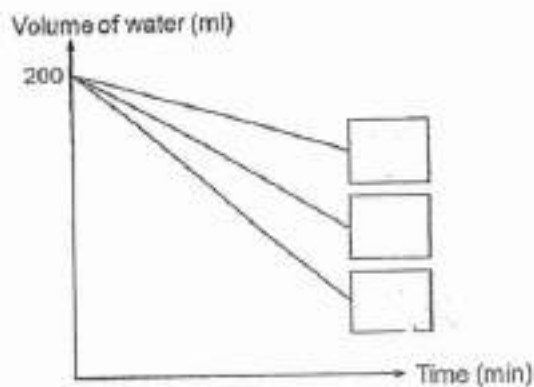
0 pts

Johan poured 200 ml of water of different temperatures into three identical containers, A, B and C, and placed them in an open field on a sunny day.



Johan measured the temperature of the water and plotted the graph as shown below.

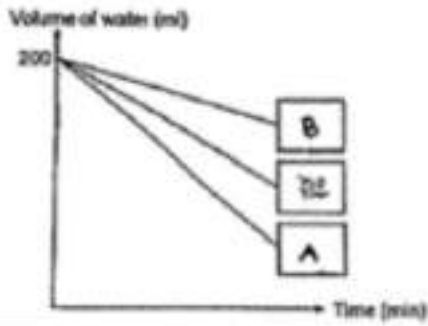
Label the lines in the graph by writing the letters (A and B) in the correct boxes according to the amount of water that would be left after 60 minutes. [1]



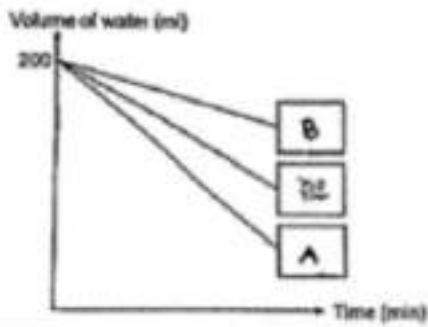
**Question Type:** Essay  
**Date Added:** Mon 6th Sep 2021

Last Modified: N/A  
QID#: 28,928,790

### Correctly answered feedback



### Incorrectly answered feedback



[Answers](#) | [Edit](#) | [Duplicate](#) | [Used In](#) | [Reorder](#)

[Remove From Test](#)

## Question 58

Primary 5 Science » Primary 5 Science (Term 4)

0 pts

c) State a difference between evaporation and boiling of water

**Question Type:** Essay  
**Date Added:** Mon 6th Sep 2021  
**Last Modified:** N/A  
**QID#:** 28,928,923

### Correctly answered feedback

Evaporation can take place at any temperature while boiling can only take place at 100

### Incorrectly answered feedback

Evaporation can take place at any temperature while boiling can only take place at 100

[Answers](#) | [Edit](#) | [Duplicate](#) | [Used In](#) | [Reorder](#)

[Remove From Test](#)

## Question 59

Primary 5 Science » Primary 5 Science (Term 4)

0 pts

Johan went for a swim. When he came out from the water, his body was wet and he felt cold. As he walked past a rotating fan, he felt even colder.



(d) Explain why Johan felt even colder when he walked past the fan. [1]

**Question Type:** Essay  
**Date Added:** Mon 6th Sep 2021  
**Last Modified:** N/A  
**QID#:** 28,928,929

#### Correctly answered feedback

The water droplets gained heat from Johan's body and evaporated. The wind from the fan blew Johan and increased the rate of evaporation

#### Incorrectly answered feedback

The water droplets gained heat from Johan's body and evaporated. The wind from the fan blew Johan and increased the rate of evaporation

[Answers](#) | [Edit](#) | [Duplicate](#) | [Used In](#) | [Reorder](#)

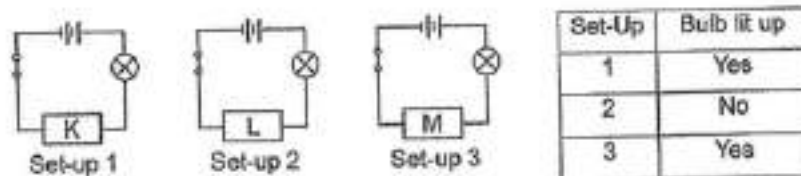
[Remove From Test](#)

## Question 60

Primary 5 Science » Primary 5 Science (Term 4)

0 pts

Mr Tan prepared three set-ups using identical batteries, wire and bulbs. Objects K, L and M are connected in the circuits as shown. The results of the experiment is as shown in the table.



From the results, which object is most likely to be an electrical insulator. Give a reason. [1]

**Question Type:** Essay  
**Date Added:** Mon 6th Sep 2021  
**Last Modified:** N/A  
**QID#:** 28,928,964

#### Correctly answered feedback

When electrical current flows through. L does not allow electricity to flow through the circuit so the bulb does not light up

**Incorrectly answered feedback**

When electrical current flows through. L does not allow electricity to flow through the circuit so the bulb does not light up

[Answers](#) | [Edit](#) | [Duplicate](#) | [Used In](#) | [Reorder](#)

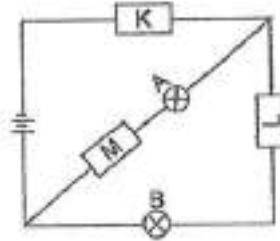
[Remove From Test](#)

**Question 61**

Primary 5 Science » Primary 5 Science (Term 4)

0 pts

Mr Tan connected objects K, L and M in another circuit as shown below.



(b) Will bulbs A and B light up? Explain your answer.

[2]

**Question Type:** Essay  
**Date Added:** Mon 6th Sep 2021  
**Last Modified:** N/A  
**QID#:** 28,928,967

**Correctly answered feedback**

Only bulb A will light up. Object K and M are electrical conductors, electric current flows through bulb A so bulb A light up

**Incorrectly answered feedback**

Only bulb A will light up. Object K and M are electrical conductors, electric current flows through bulb A so bulb A light up

[Answers](#) | [Edit](#) | [Duplicate](#) | [Used In](#) | [Reorder](#)

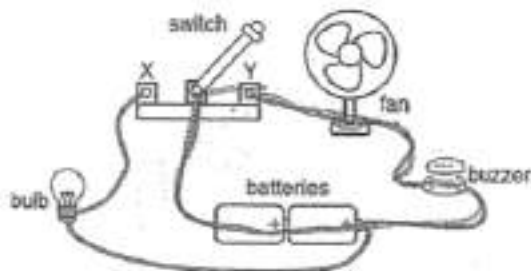
[Remove From Test](#)

**Question 62**

Primary 5 Science » Primary 5 Science (Term 4)

0 pts

Kelly sets up an electric circuit as shown below. The switch can be closed at either point X or Y.



What will Kelly observe when she closes the switch at point Y?

[1]

**Question Type:** Essay  
**Date Added:** Mon 6th Sep 2021  
**Last Modified:** N/A  
**QID#:** 28,928,973

**Correctly answered feedback**

The fan and buzzer will be switch on while the bulb will not be lit up

**Incorrectly answered feedback**

The fan and buzzer will be switch on while the bulb will not be lit up

Answers | Edit | Duplicate | Used In | Reorder

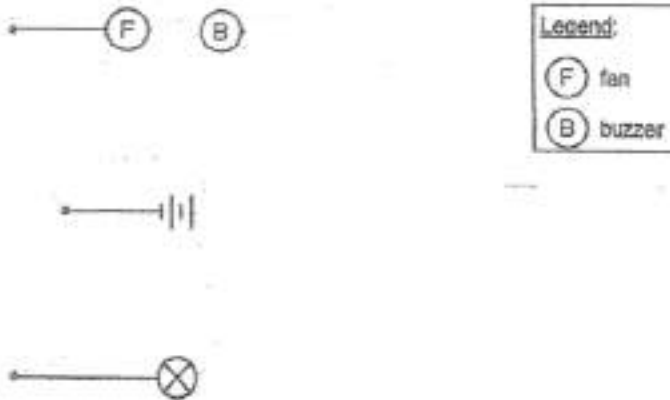
Remove From Test

**Question 63**

Primary 5 Science » Primary 5 Science (Term 4)

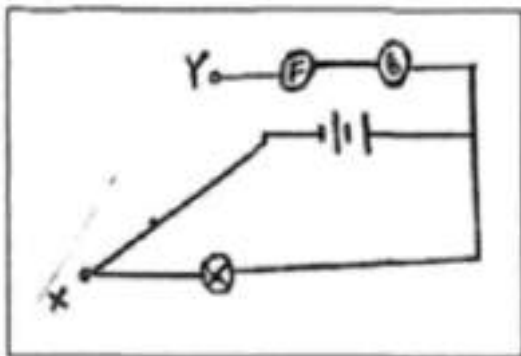
0 pts

Refer to the diagram below. Complete the circuit diagram for the above circuit when the switch is closed at point X. Label points X and Y clearly. [2]



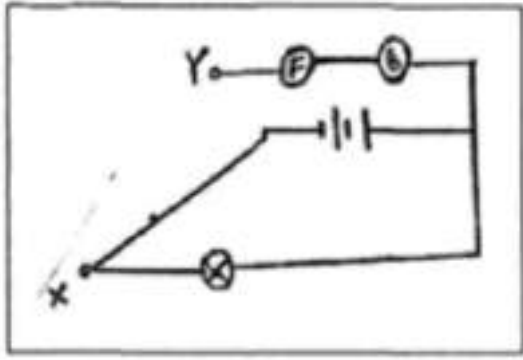
**Question Type:** Essay  
**Date Added:** Mon 6th Sep 2021  
**Last Modified:** N/A  
**QID#:** 28,928,977

**Correctly answered feedback**



**Incorrectly answered feedback**





[Answers](#) | [Edit](#) | [Duplicate](#) | [Used In](#) | [Reorder](#)

[Remove From Test](#)

[www.classmarker.com](http://www.classmarker.com)